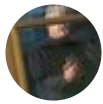


← Thread

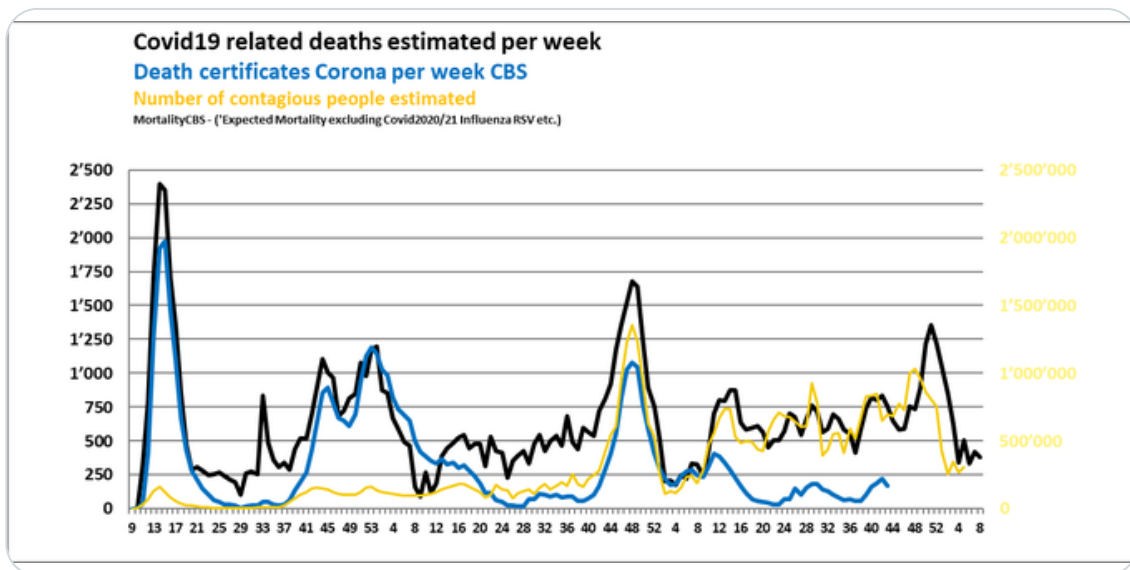


NoCovid 🇪🇺 Kano
@falsel_net



Week 8 Dutch CDC excess mortality: 2
Delayed † certificates +111 until week 7
3.461 deaths were published Week 8;
deaths from #SARSCoV2 (complications): 382
Estimated death toll vs. 2019 population ~99.600
at close to 49 million #SARSCoV2 infections.

cbs.nl/nl-nl/maatwerk...



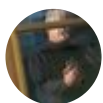
1:19 AM · Mar 3, 2023 · 88 Views

2 Retweets 1 Like



Tweet your reply

Reply



NoCovid 🇪🇺 Kano @falsel_net · Mar 3
Replying to @falsel_net



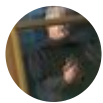
The Dutch CBS 'expected' 2023 deaths, like previous years, is ~11% too high; given the fact that many people (during 20/21/22) already died from or with #Covid and survivors should thus have shown a lower mortality risk..

Tabel 6
Verwacht aantal overledenen wanneer er geen corona-epidemie was geweest (schatting)

2020	156 667
2021	154 890
2022	155 496
2023	156 666

Bron: CBS.

1 ↺ ❤️ 1 📊 54 ↗



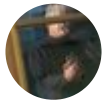
NoCovid 🇳🇵 **Kano** @falsel_net · Mar 3

Not surprisingly, at rising XBB* prevalence, mortality now appears to increase (2x) more than could have otherwise been predicted among younger people:

$$\text{Log(FatalityRate\%)} = -4.8 + 0.05 \text{ InfectionRisk\%} + 0.008 \%Vaxx'd + 0.05 \text{ Age}$$

Population	Age Group	Infection Risk%	%Vaxx'd	LOGFatality%	Predicted	Week 8 pro rata CBS
1'052'019	15	15 - 20	-0.1	68	-3.5	0
1'079'925	20	20 - 25	-0.1	68	-3.3	0
1'121'863	25	25 - 30	-0.1	75	-3.0	0
1'076'906	30	30 - 35	0.0	73	-2.7	0
1'031'293	35	35 - 40	0.0	75	-2.5	1
1'025'388	40	45 - 50	0.0	78	-2.2	1
1'235'593	45	45 - 50	0.0	82	-1.9	3 6
1'276'720	50	50 - 55	0.0	85	-1.6	6
1'231'319	55	55 - 60	0.0	88	-1.3	11
1'096'433	60	60 - 65	0.0	89	-1.1	17 34
992'499	65	65-70	0.0	87	-0.9	27
912'384	70	70-75	0.0	92	-0.6	48
606'890	75	75-80	0.0	93	-0.3	58 132
418'878	80	80-85	0.0	93	-0.1	71
244'790	85	85-90	0.0	92	0.2	72 143
96'180	90	90-95	0.0	90	0.4	48
23'364	95	95+	0.0	85	0.6	19 68
					382	382

1 ↺ ❤️ 📊 42 ↗



NoCovid 🇳🇵 **Kano** @falsel_net · 7h

SARSCoV2 prevalence rose sharply again recently. Trend mortality (CFR) continues to rise. #Covid19 burden of disease is now causing more deaths among younger (<50yrs) people: Health care personnel drops out and a long term recession looms: Life expectancy will decline further.

