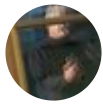
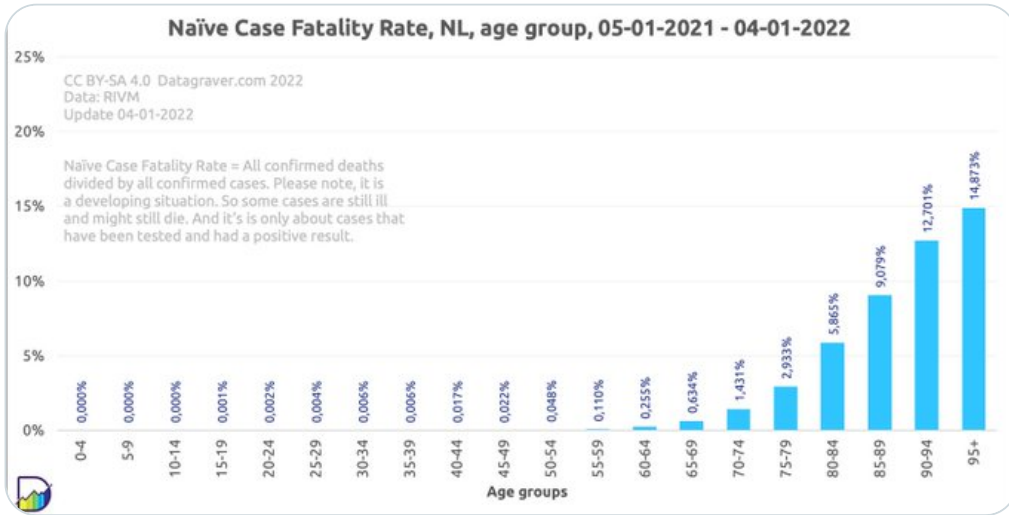


← Thread

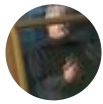


**NoCovid** 🇪🇺 **Kano** @falsel\_net · Jan 9, 2022  
 Observational analysis #Covid19 Netherlands.

Data 2021 Rivm:  
 Confirmed nCFRs, h/t @datagraver:



2 5 4

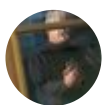


**NoCovid** 🇪🇺 **Kano** @falsel\_net · Jan 9, 2022  
 Comparison multiple parameters #Covid19NL 2021.

Age stratified #SARSCoV2 testing data, confirmed and total Corona mortality, time-weighted fully vaccinated population at estimated 1,6% Coronavirus prevalence.

	Confirmed † =	27%	'Real' est. †	Inferred Corona 'Prevalence'				1,6%		year 2021	
	% nCFR	Population	Est.total †	Deathrate/100k	% vaxx'd	Tested/100.000	All tested	%Pop.+	Deaths/100.000	Confirmed Deaths	
65-70	0,634	992.499	1.694	171	54	7.858	77.991	7,9%	49,81	494	
70-75	1,431	912.384	2.579	283	58	6.731	61.413	6,7%	96,29	879	
75-80	2,933	606.890	3.940	649	62	7.125	43.241	7,1%	208,99	1.268	
80-85	5,865	418.878	5.228	1.248	69	6.986	29.263	7,0%	409,69	1.716	
85-90	9,079	244.790	6.684	2.730	70	8.305	20.330	8,3%	754,05	1.846	
90-95	12,701	96.180	6.059	6.300	66	10.666	10.259	10,7%	1354,62	1.303	
95+	14,873	23.364	2.911	12.458	66	13.860	3.238	13,9%	2061,39	482	
Population	0,4%	17.262.263	32.207	187		13.596	2.346.900	13,6%	49,8	8.601	

1 1



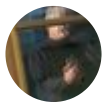
**NoCovid** 🇪🇺 **Kano** @falsel\_net · Jan 9, 2022  
 Multiple regression analysis #Covid19NL 2021.

R2 = 1 and, predictors significantly explain 95.4% of variance in observed population % mortality dependent on infection risk, vaccination coverage and age category.

$$\text{Mortality\%} = -16.2 + 0.8 \text{ InfectionRisk\%} - 0.2 \% \text{Vaxx'd} + 0.3 \text{ Age}$$



1 2

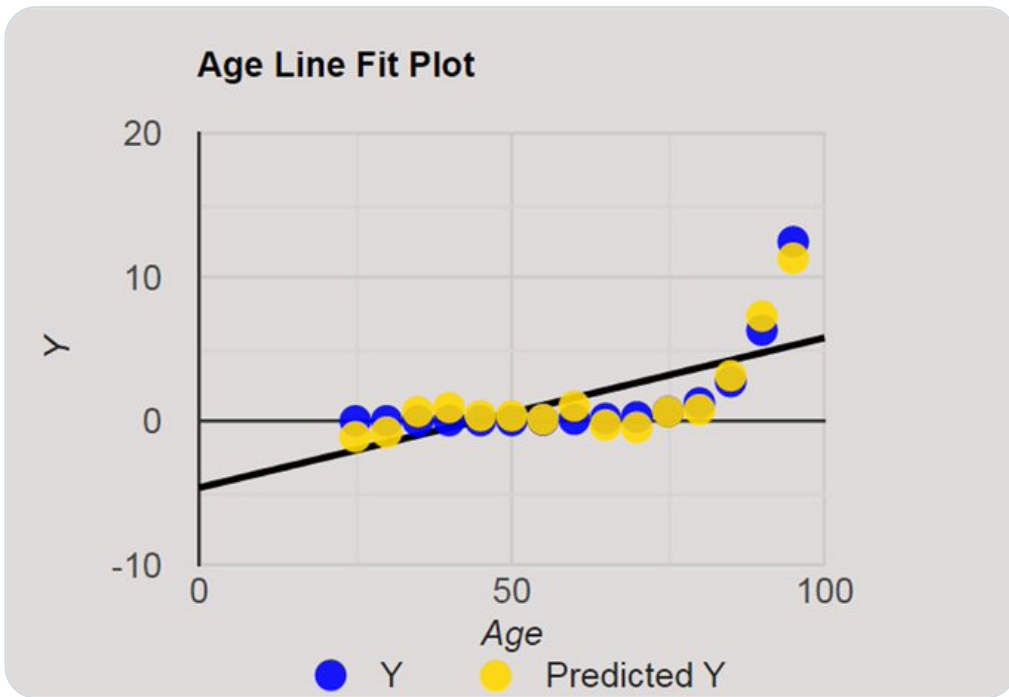


**NoCovid** 🇪🇺 **Kano** @falsel\_net · Jan 9, 2022

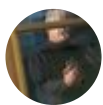
Observational analysis #Covid19 Netherlands 2021.

Population % mortality (Y) was highly dependent of age.

[statskingdom.com/410multi\\_linea...](https://statskingdom.com/410multi_linea...)



1 2 2

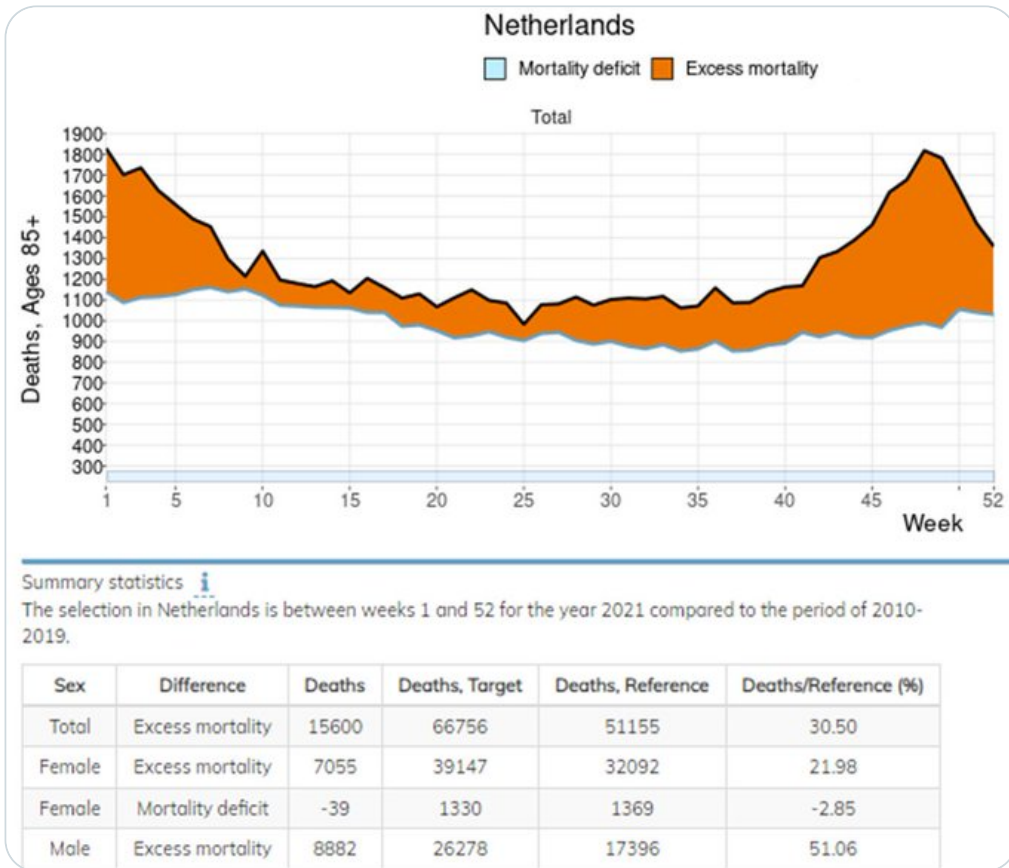


**NoCovid** 🇪🇺 **Kano** @falsel\_net · Jan 11, 2022

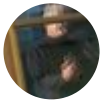
Observational analysis #Covid19 Netherlands.

Calculated full year 2021 Corona mortality for the population over 85 years old is now validated by excess deaths over 2010-2019 lower quartile mortality weeks 1 through 52.

[mpidr.shinyapps.io/stmortality/](https://mpidr.shinyapps.io/stmortality/)



1 ↻ 1 📊 ⬆



**NoCovid** 🇪🇺 **Kano** @falsel\_net · Jan 11, 2022

The Dutch herdimmunity strategy [rijksoverheid.nl/documenten/toe...](https://rijksoverheid.nl/documenten/toe...), originally planned for @ 60% Corona virus prevalence, could have rendered a total population excess mortality of 1 million citizens at a #SARSCoV2 Infection Fatality Rate (IFR) of 5,7% during 2021.

Data on file:

	Confirmed † =	27%	'Real' est. †	Corona 'Prevalence'				60,0%		year 2021	year 2021
	% nCFR	Population	Est.total †	IFR	% vaxx'd	Tested/100.000	All tested	%Pop.+	Deaths/100.000	Confirmed Deaths	
0 - 5	0,000	866.062	-	0%	0	5.146	44.568	5,1%	0,00	-	
5 - 10	0,000	917.442	-	0%	0	17.592	161.396	17,6%	0,00	-	
10 - 15	0,000	956.315	-	0%	0	19.150	183.134	19,2%	0,00	-	
15 - 20	0,001	1.052.019	608	0%	22	18.806	197.843	18,8%	0,19	2	
20 - 25	0,002	1.079.925	1.611	0%	33	21.365	230.726	21,4%	0,45	5	
25 - 30	0,004	1.121.863	2.163	0%	32	17.174	192.669	17,2%	0,62	7	
30 - 35	0,006	1.076.906	2.661	0%	33	15.873	170.937	15,9%	0,89	10	
35 - 40	0,006	1.031.293	2.744	0%	36	16.471	169.864	16,5%	0,95	10	
40 - 45	0,017	1.025.388	7.405	1%	41	16.121	165.303	16,1%	2,71	28	
45 - 50	0,022	1.235.593	8.624	1%	43	13.932	172.143	13,9%	3,09	38	
50 - 55	0,048	1.276.720	16.659	1%	47	12.896	164.646	12,9%	6,22	79	
55 - 60	0,110	1.231.319	27.420	2%	49	11.129	137.034	11,1%	12,27	151	
60 - 65	0,255	1.096.433	46.757	4%	48	10.115	110.904	10,1%	25,84	283	
65 - 70	0,634	992.499	63.509	6%	54	7.858	77.991	7,9%	49,81	494	
70 - 75	1,431	912.384	96.687	11%	58	6.731	61.413	6,7%	96,29	879	
75 - 80	2,933	606.890	147.701	24%	62	7.125	43.241	7,1%	208,99	1.268	
80 - 85	5,865	418.878	195.976	47%	69	6.986	29.263	7,0%	409,69	1.716	
85 - 90	9,079	244.790	244.790	100%	70	8.305	20.330	8,3%	754,05	1.846	
90 - 95	12,701	96.180	96.180	100%	66	10.666	10.259	10,7%	1354,62	1.303	
95+	14,873	23.364	23.364	100%	66	13.860	3.238	13,9%	2061,39	482	
Population	0,4%	17.262.263	984.859	5,7%		13.596	2.346.900	13,6%	49,8	8.601	

1 ↻ 3 📊 ⬆

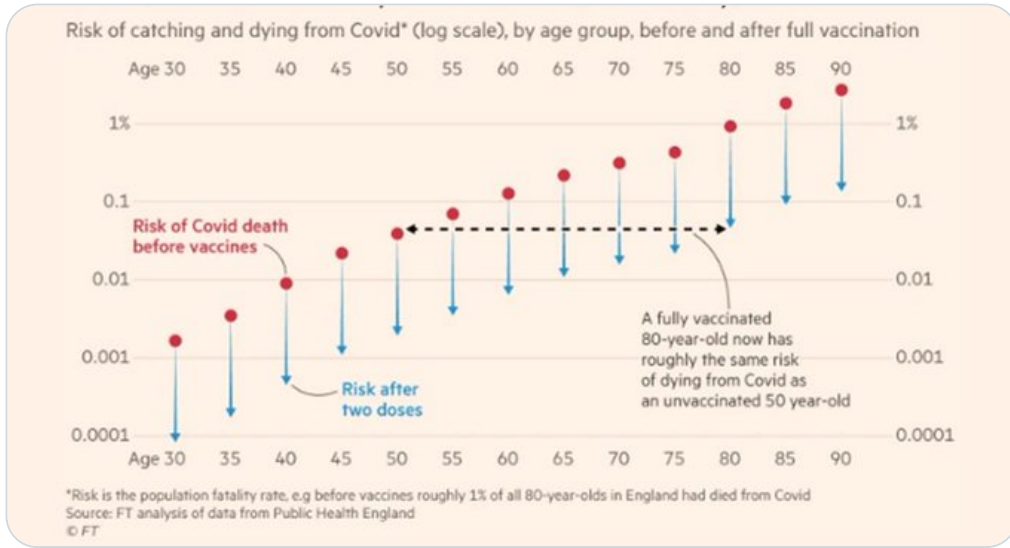


NoCovid 🇪🇺 Kano @falsel\_net · Jan 12, 2022

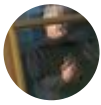


Whereas #SARSCoV2 mortality risk increases exponentially with Age, many analyses have been done after Log transformation of Fatality Rates.

re. @jburnmurdoch @FT:  
[ft.com/content/Of11b2...](https://www.ft.com/content/Of11b2...)



1 1 1



NoCovid 🇪🇺 Kano @falsel\_net · Jan 12, 2022

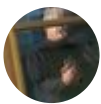


Observational analysis 2021 Netherlands.  
Multiple regression analysis #Covid19NL:  
Age-stratified Fatality dependent on Infection-Risk and proportion of population fully vaccinated:  
 $\text{Log}(\text{Fatality}\%) = -4.8 + 0.05 \text{InfectionRisk}\% + 0.008 \% \text{Vaxx'd} + 0.05 \text{Age}$

R2=1, explaining 99.0% of variance:



1 1 2



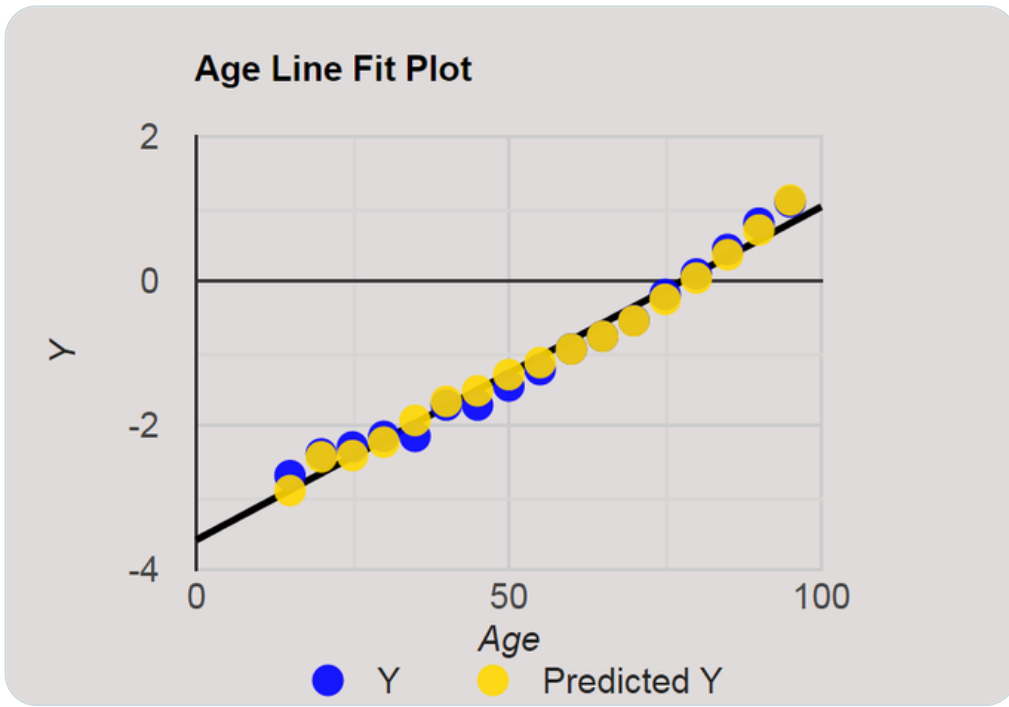
NoCovid 🇪🇺 Kano @falsel\_net · Jan 12, 2022



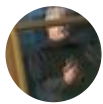
Observational analysis #Covid19 Netherlands 2021.

Log Population % mortality Y highly dependent on age:

[statskingdom.com/410multi\\_linea...](https://statskingdom.com/410multi_linea...)



🔍 1 ↺ 1 ❤️ 1 📊 ⬆️



**NoCovid** 🇪🇺 Kano  
@falsel\_net

...

Observational analysis #Covid19 Netherlands 2021.

Model of predicted mortality in comparison to reality:

$$\text{Log(FatalityRate\%)} = -4.8 + 0.05 \text{ InfectionRisk\%} + 0.008 \text{ \%Vaxx'd} + 0.05 \text{ Age}$$

Population	Age Group	Infection Risk%	%Vaxx'd	LOGFatality%	Predicted	Observed	
1.052.019	<b>15</b>	15 - 20	18,8	22	-2,9	12	16
1.079.925	<b>20</b>	20 - 25	21,4	33	-2,5	37	43
1.121.863	<b>25</b>	25 - 30	17,2	32	-2,4	41	58
1.076.906	<b>30</b>	30 - 35	15,9	33	-2,2	62	71
1.031.293	<b>35</b>	35 - 40	16,5	36	-1,9	119	73
1.025.388	<b>40</b>	45 - 50	16,1	41	-1,7	221	198
1.235.593	<b>45</b>	45 - 50	13,9	43	-1,5	382	230
1.276.720	<b>50</b>	50 - 55	12,9	47	-1,3	671	444
1.231.319	<b>55</b>	55 - 60	11,1	49	-1,1	975	731
1.096.433	<b>60</b>	60 - 65	10,1	48	-0,9	1.348	1.247
992.499	<b>65</b>	65 - 70	7,9	54	-0,7	1.869	1.694
912.384	<b>70</b>	70 - 75	6,7	58	-0,5	2.889	2.579
606.890	<b>75</b>	75 - 80	7,1	62	-0,2	3.849	3.940
418.878	<b>80</b>	80 - 85	7,0	69	0,1	5.289	5.228
244.790	<b>85</b>	85 - 90	8,3	70	0,4	6.517	6.684
96.180	<b>90</b>	90 - 95	10,7	66	0,8	5.551	6.059
23.364	<b>95</b>	95+	13,9	66	1,2	3.464	2.911
					33.296	32.207	

12:02 PM · Jan 12, 2022

1 Quote 1 Like



Tweet your reply

Reply

This Tweet was deleted by the Tweet author. Learn more



**Thread Reader App** @threadreaderapp · Mar 30, 2022



Replying to @falsel\_net

Hi, here is your unroll: [threadreaderapp.com/thread/1480173...](https://threadreaderapp.com/thread/1480173...) Have a good day. 🤖

**Thread reader**

Tweet

Share

Thread by Kano 🇪🇺 #zeroCovid (@falsel\_net), 9 Jan

Observational analysis #Covid19  
Netherlands. Data 2021 Rivm:  
Confirmed nCFRs, h/t @Datagraver:  
Comparison multiple parameters...



[threadreaderapp.com](https://threadreaderapp.com)

Thread by @falsel\_net on Thread Reader App

@falsel\_net: Observational analysis #Covid19 Netherlands. Data 2021 Rivm: Confirmed nCFRs, h/t @Datagraver: Comparison multiple ...

